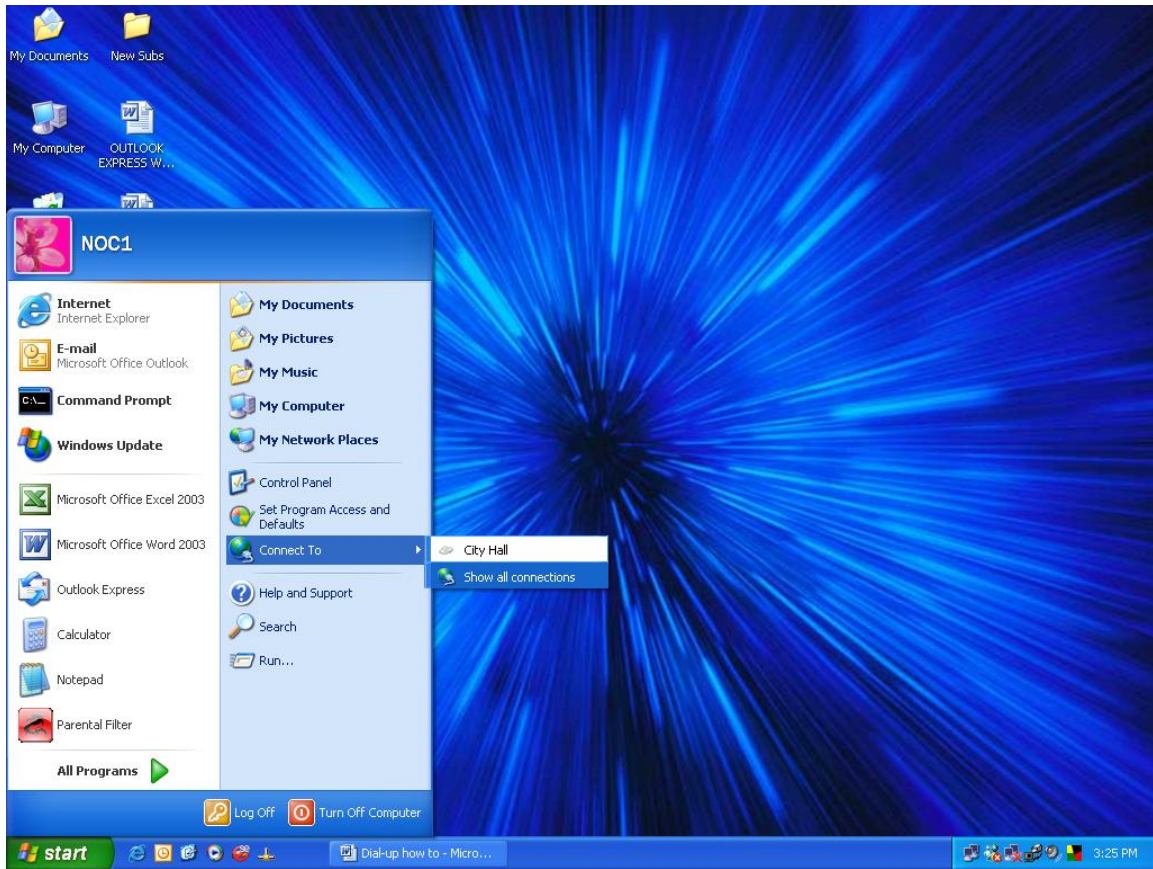
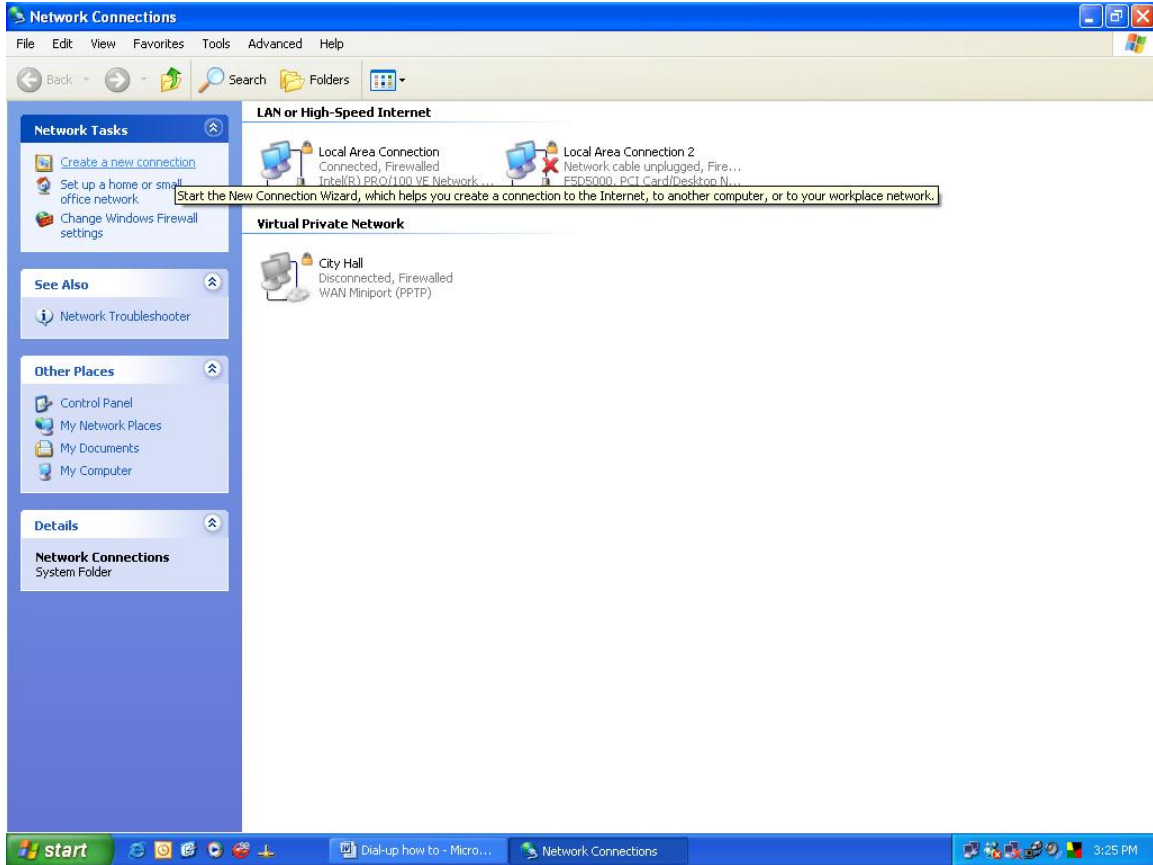


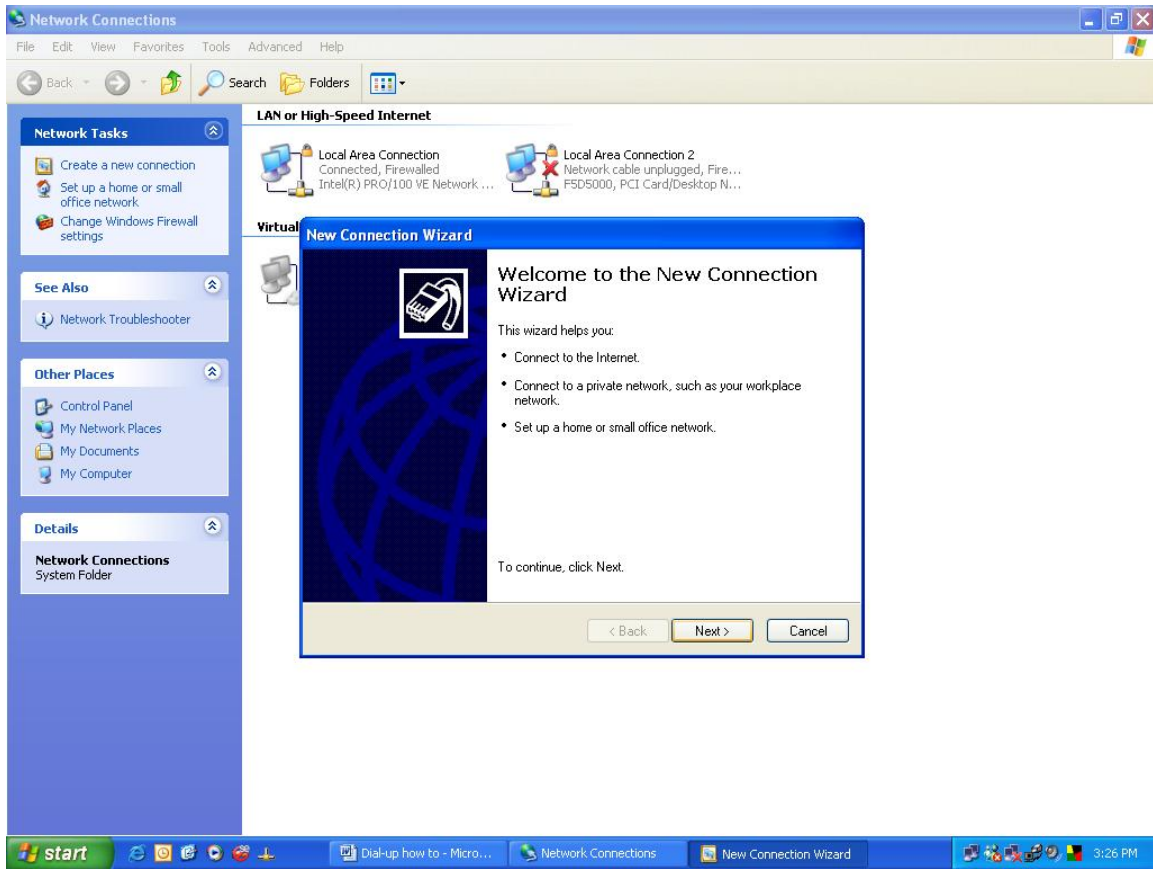
Click on “Start” from your desktop. Then click on “connect to” and drag to “show all connections”.



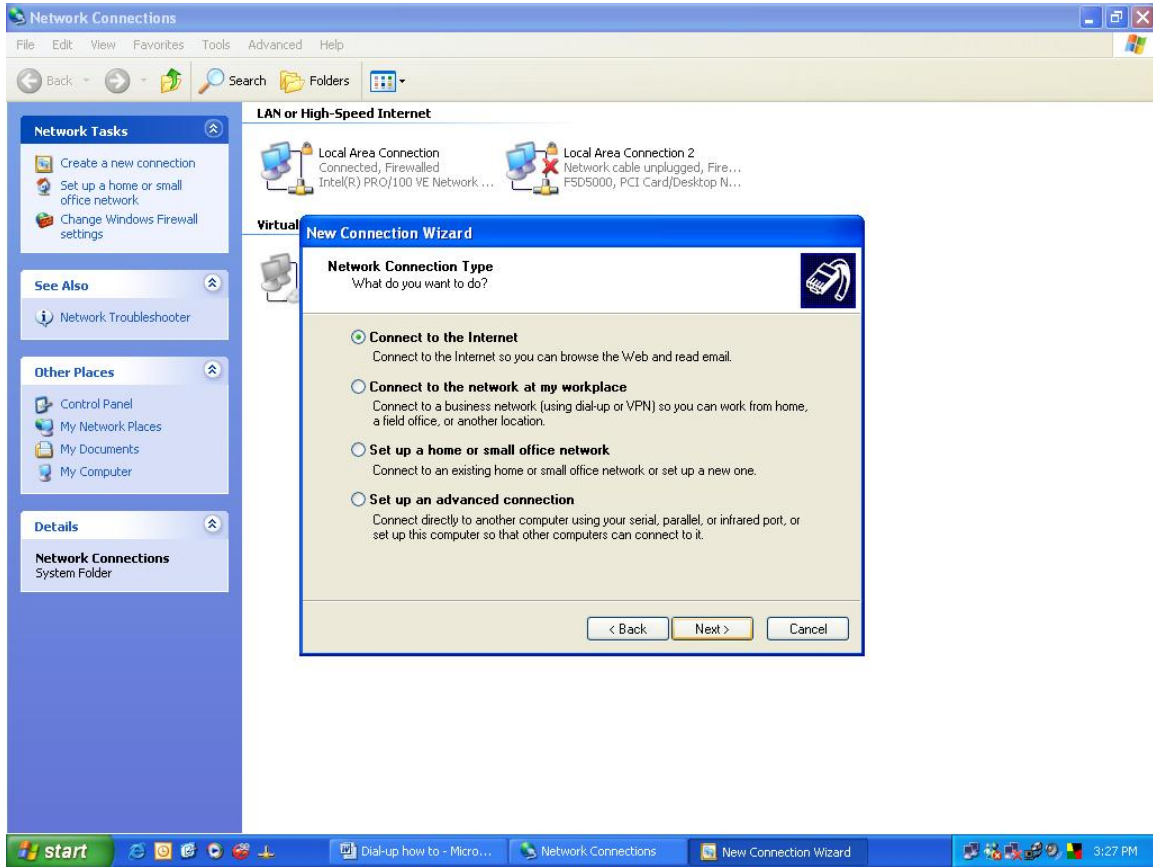
Now click on “create a new connection” under “Network Tasks”.



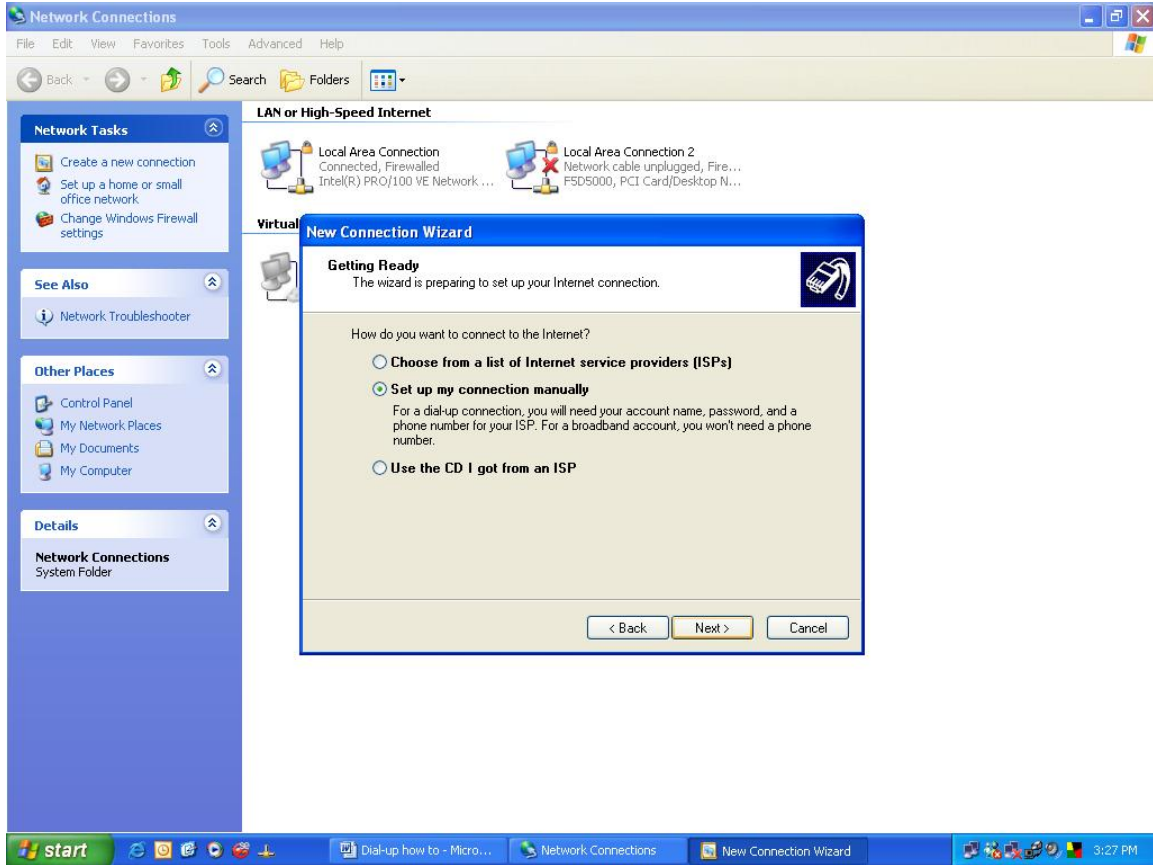
You will then see the “New Connection Wizard” window pop-up. Click Next.



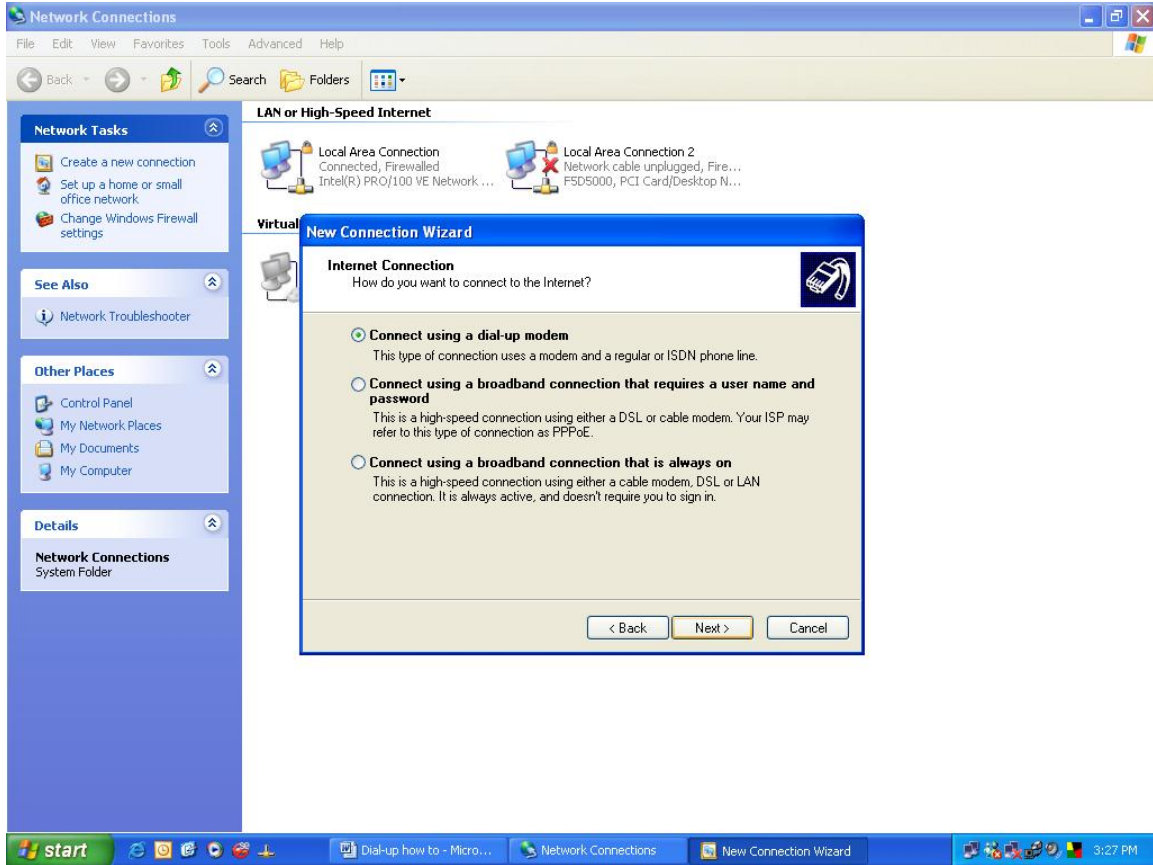
Click on “Connect to the internet”. Then click Next.



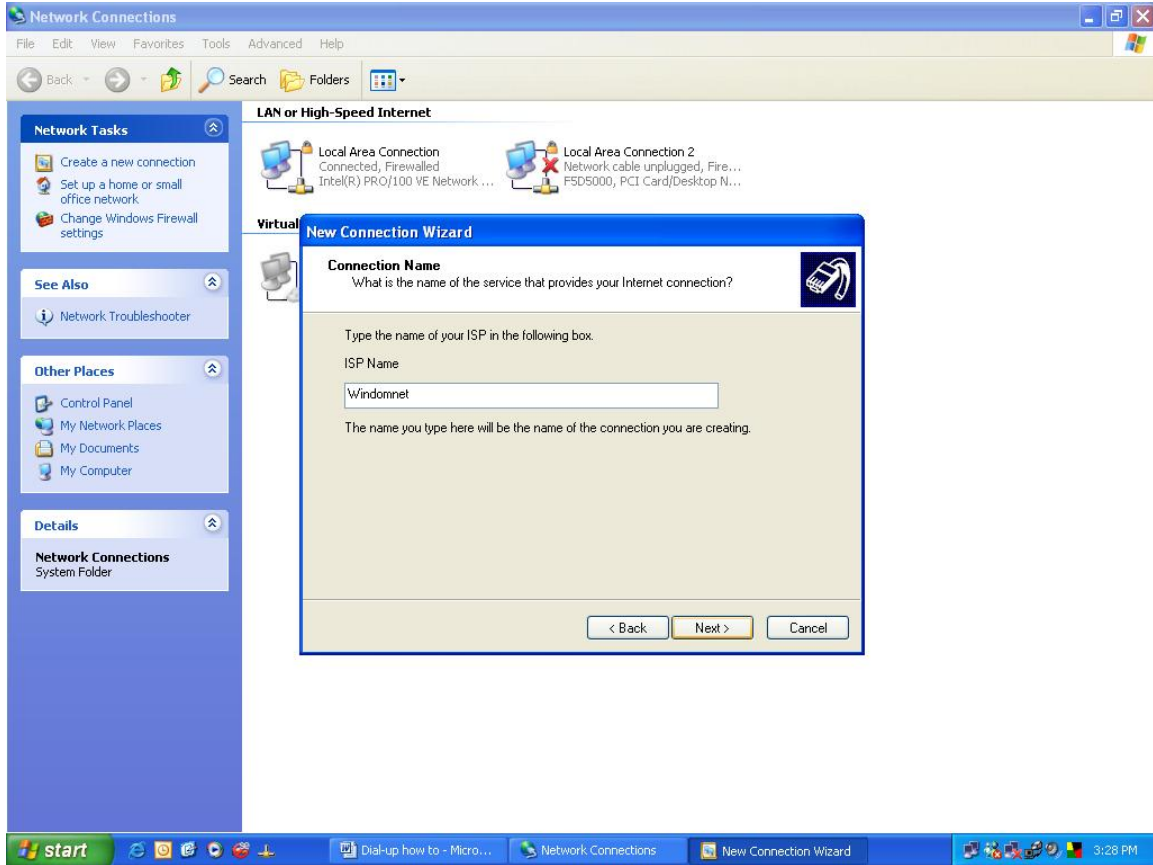
Now Click on “Set up my connection manually”. Then Click Next.



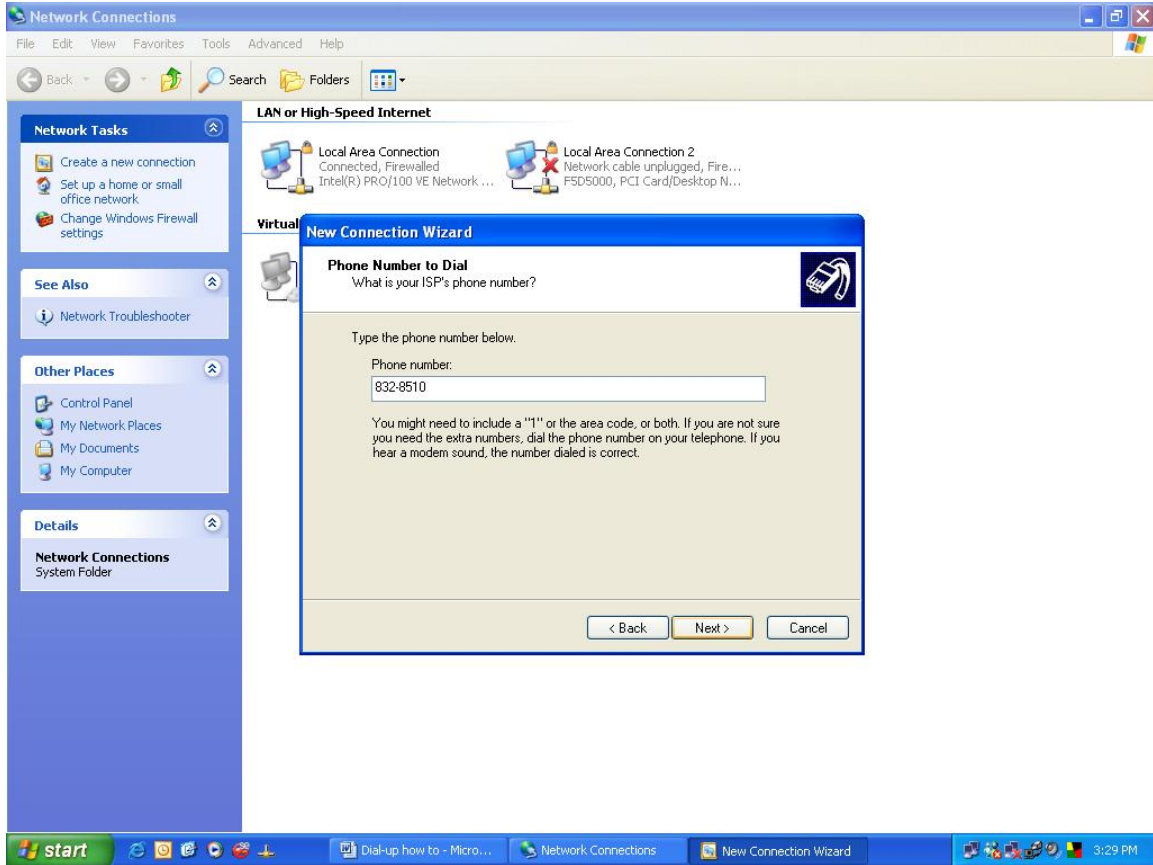
Select "Connect using a dial-up modem. Click Next.



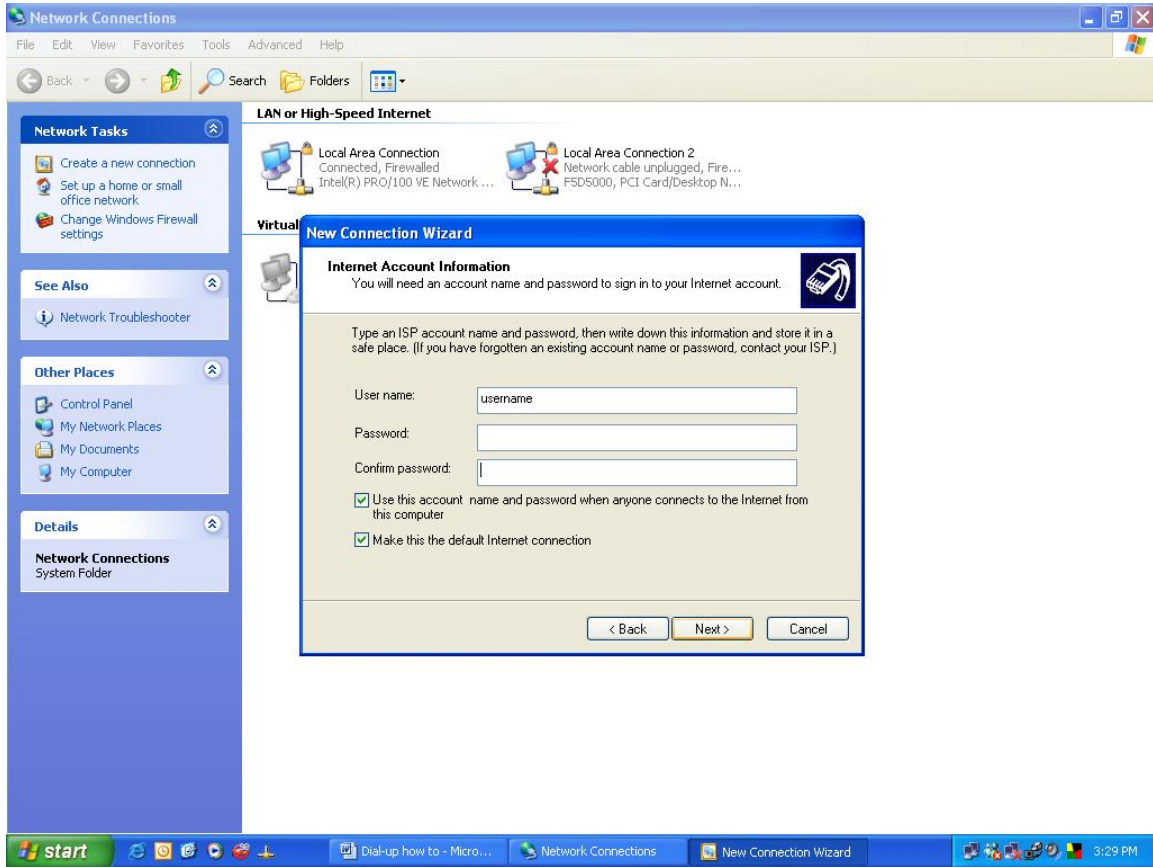
Now type Windomnet in the box under “ISP Name”. Click Next.



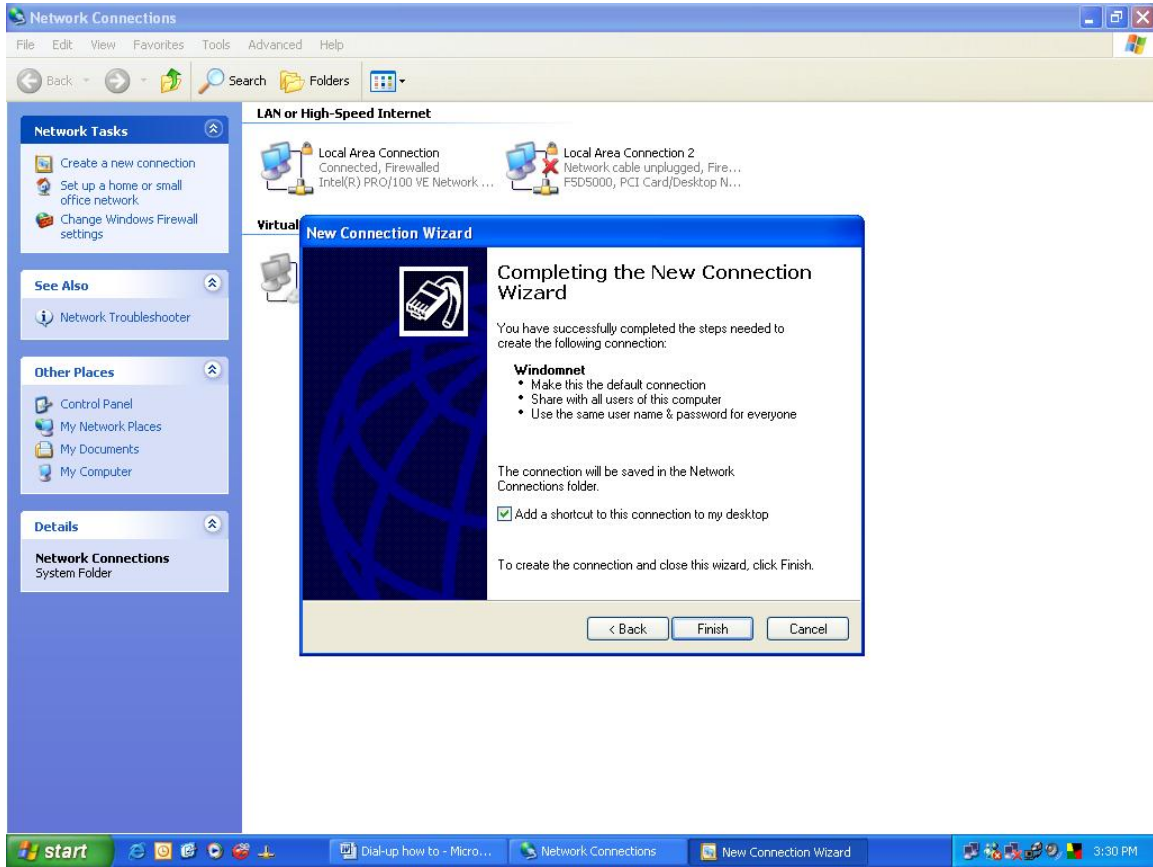
Now type in the local phone#(832-8510) in the box under “phone number”. Click Next.



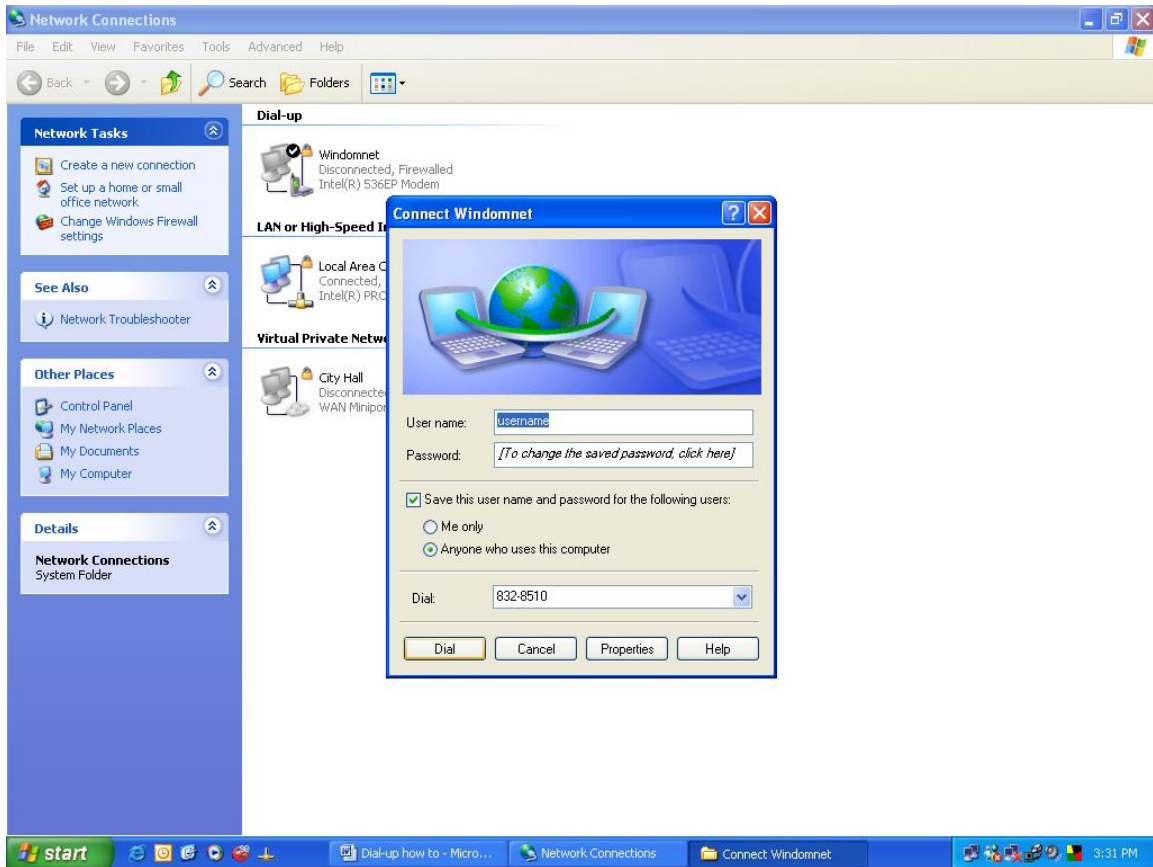
Now type in your username and password. Click Next.



Now check in the box “Add a shortcut to this connection to my desktop”. Then click Finish.



You will see a window pop-up “connect windomnet”. Click Dial to go online.



You will also have a shortcut on your desktop to click on for future connections.