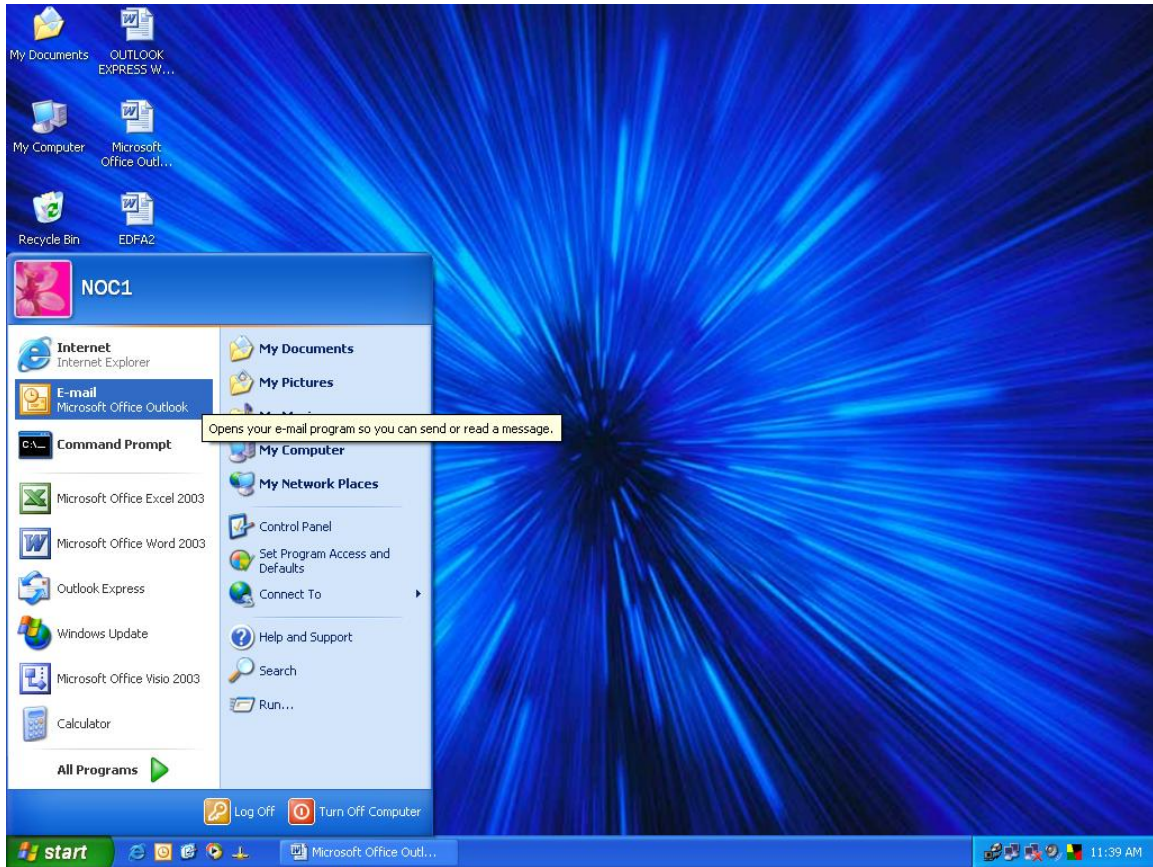
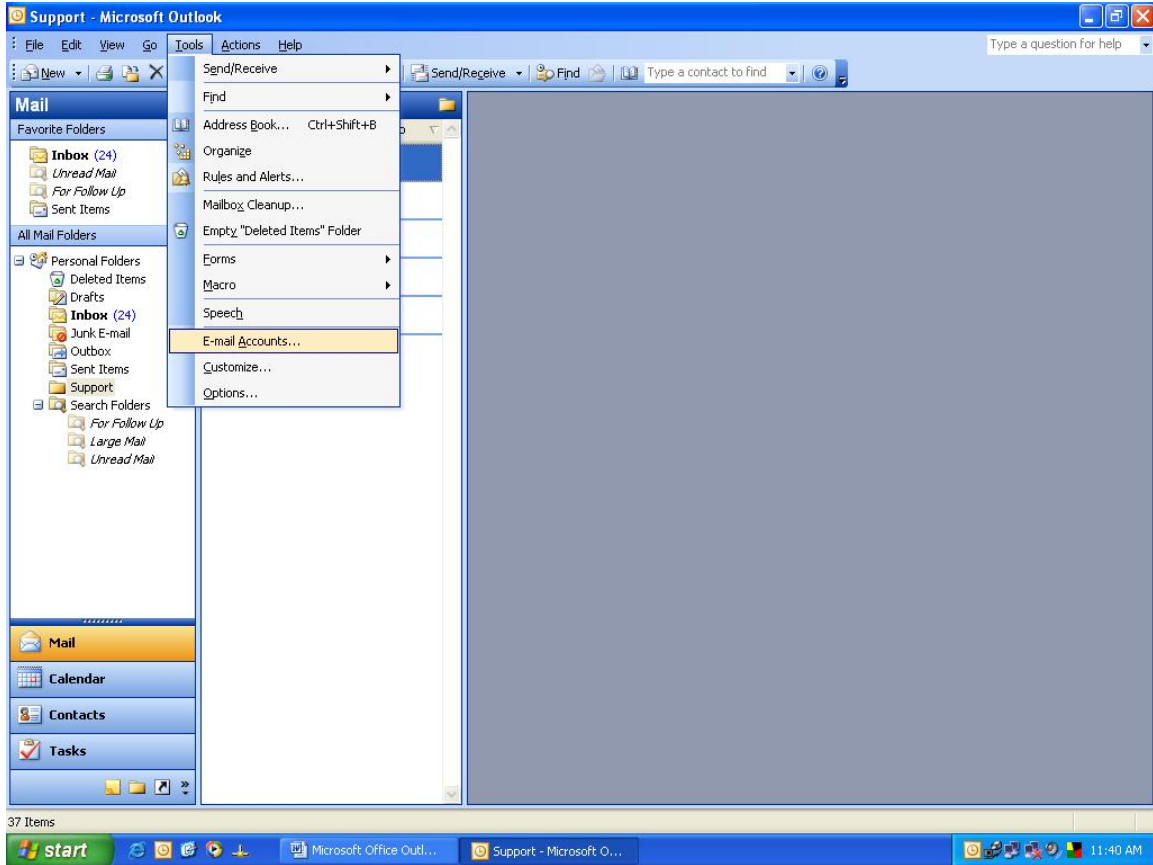


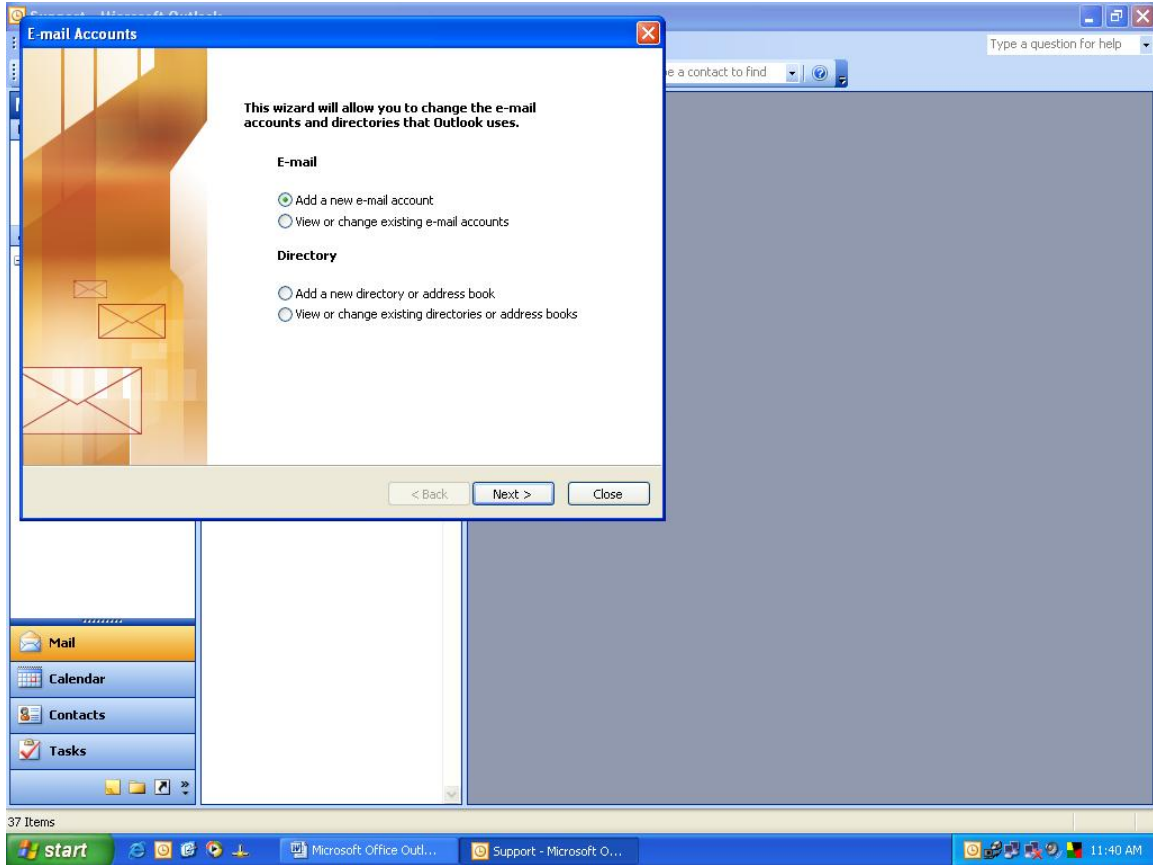
Click on Start from your desktop. Click on Microsoft Office Outlook.



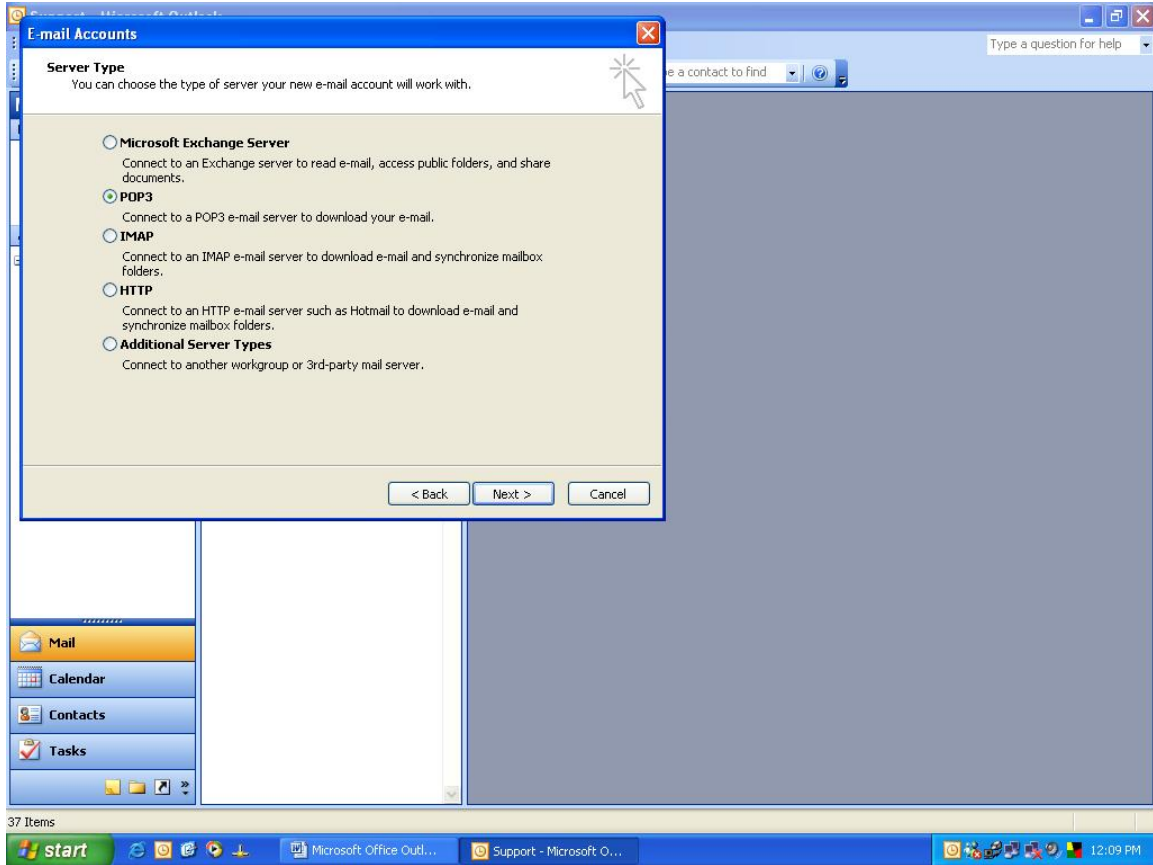
Click on Tools. Then scroll down and click on E-mail Accounts.



Click “Add a new e-mail account”, then click Next.



Select "POP3", then click Next.



Now enter “User Information”:

Your Name: \_\_\_\_\_

E-mail address: \_\_\_\_\_@windomnet.com

Incoming Mail Server(POP3): pop3.windomnet.com

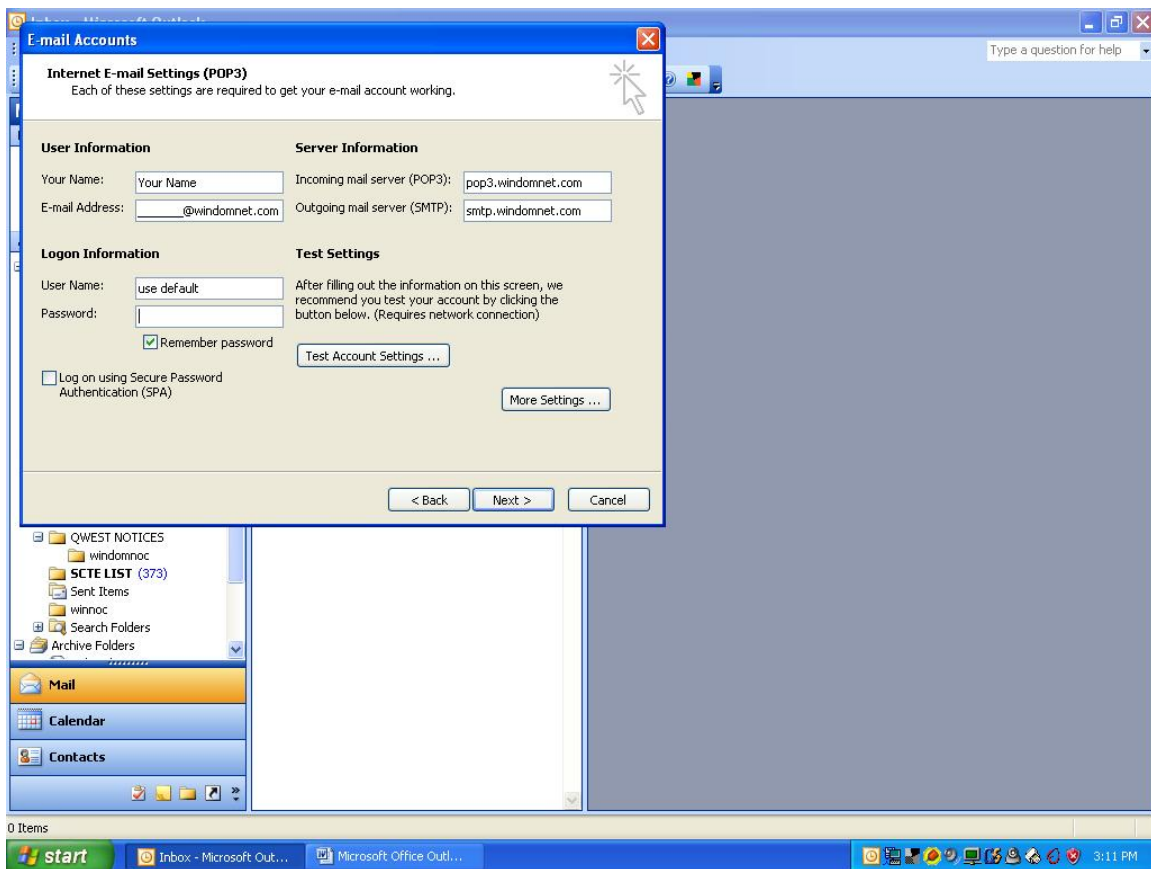
Outgoing Mail Server(SMTP): smtp.windomnet.com

And “Logon Information”

User Name: Use default

Password: \_\_\_\_\_

Click next after above information has been answered.



Click Finish. You're done.

